

## Sequence for Entry into Japan

-Microchip must be ISO compatible.  
-If pet has had multiple rabies vaccines given after microchip, the two most recent must be given within one year of each other.

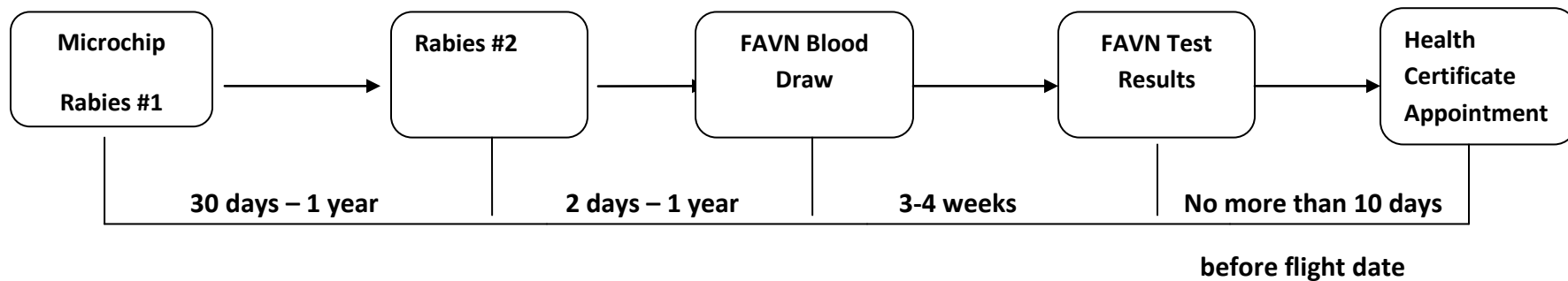
-Must wait 30 days after Rabies #1. Must be done within one year of entry.  
-Rabies certificates required for both vaccines.

-If pet is less than one year old or first rabies was the first given in pet's lifetime then a wait of 30 days is recommended.

- Test result must be greater than 0.5 IU/ml. If not then revaccinate and start again.

-“Quarantine” starts the day the FAVN test was drawn plus 180 days.

-Advanced notification to commercial point of entry is required.



Required Documents (advanced notification form and MDJ 270) and Pet Processing Checklist can be found at the website of the Japan District Public Health Command:

[http://www.usarj.army.mil/organization/vet/r\\_doc.aspx](http://www.usarj.army.mil/organization/vet/r_doc.aspx)

Please call the Camp Pendleton Veterinary Activity if you have any questions. (760) 725-3439